



# INDOFINE Chemical Company, Inc.

121 Stryker Lane, Bldg. 30, Suite 1 • Hillsborough, NJ 08844 • U.S.A.

Phone: (908) 359-6778 • FAX: (908) 359-1179

website: [www.indofinechemical.com](http://www.indofinechemical.com)

e-mail: [chemical@indofinechemical.com](mailto:chemical@indofinechemical.com)

## CERTIFICATE OF ANALYSIS

Catalog Number: 027253S

Product Name: **ALLIIN with HPLC**  
((S)-3-(Allylsulfinyl)-L-alanine)

CAS Number: [556-27-4]

Lot Number: 1609888

Chemical Formula: C<sub>6</sub>H<sub>11</sub>NO<sub>3</sub>S

Molecular Weight: 177.21

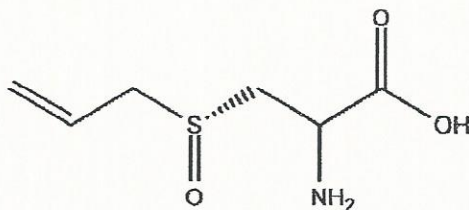
Botanical Source: Allium sativu

Appearance: Off-white powder

Loss on drying: 1.1%

Storage: Store in a cool, dry place. Protect from light.  
To be kept in a desiccator.

Purity(HPLC): 98.5%





# INDOFINE Chemical Company, Inc.

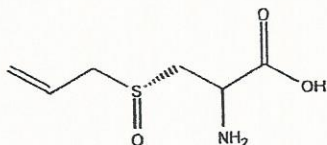
121 Stryker Lane, Bldg. 30, Suite 1 • Hillsborough, NJ 08844 • U.S.A.

Phone: (908) 359-6778 • FAX: (908) 359-1179

website: [www.indofinechemical.com](http://www.indofinechemical.com)

e-mail: [chemical@indofinechemical.com](mailto:chemical@indofinechemical.com)

## HPLC ANALYSIS



Catalog No.: 027253S

Product Name: Alliin

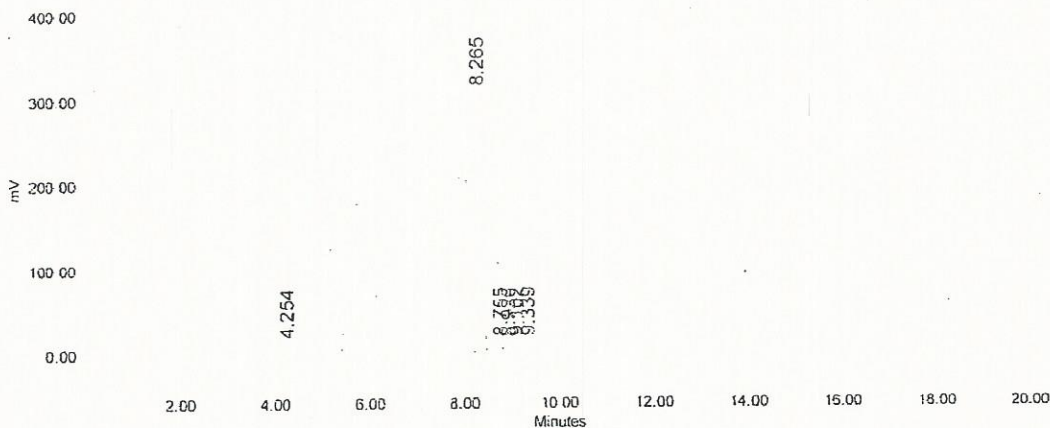
Lot No.: 1609888

### SAMPLE INFORMATION

Sample Name: Alliin  
 Sample Type: Unknown  
 Vial: 79  
 Injection #: 2  
 Injection Volume: 10.00 ul  
 Run Time: 20.0 Minutes

Acquired By: System  
 Sample Set Name:  
 Acq. Method Set: Alliin  
 Processing Method: Samples  
 Channel Name: SATIN  
 Proc. Chnl. Descr.:

Auto-Scaled Chromatogram



#### Peak Results

Name	RT	Area	% Area	USP Plate Count	USP Resolution
1	4.254	25232	0.58	1565.32	
2	8.265	4265200	98.49	14403.18	10.67
3	8.755	5738	0.13	50875.68	1.77
4	8.926	4245	0.10		
5	9.102	9444	0.22	21837.21	
6	9.339	20525	0.47	15941.04	0.90